

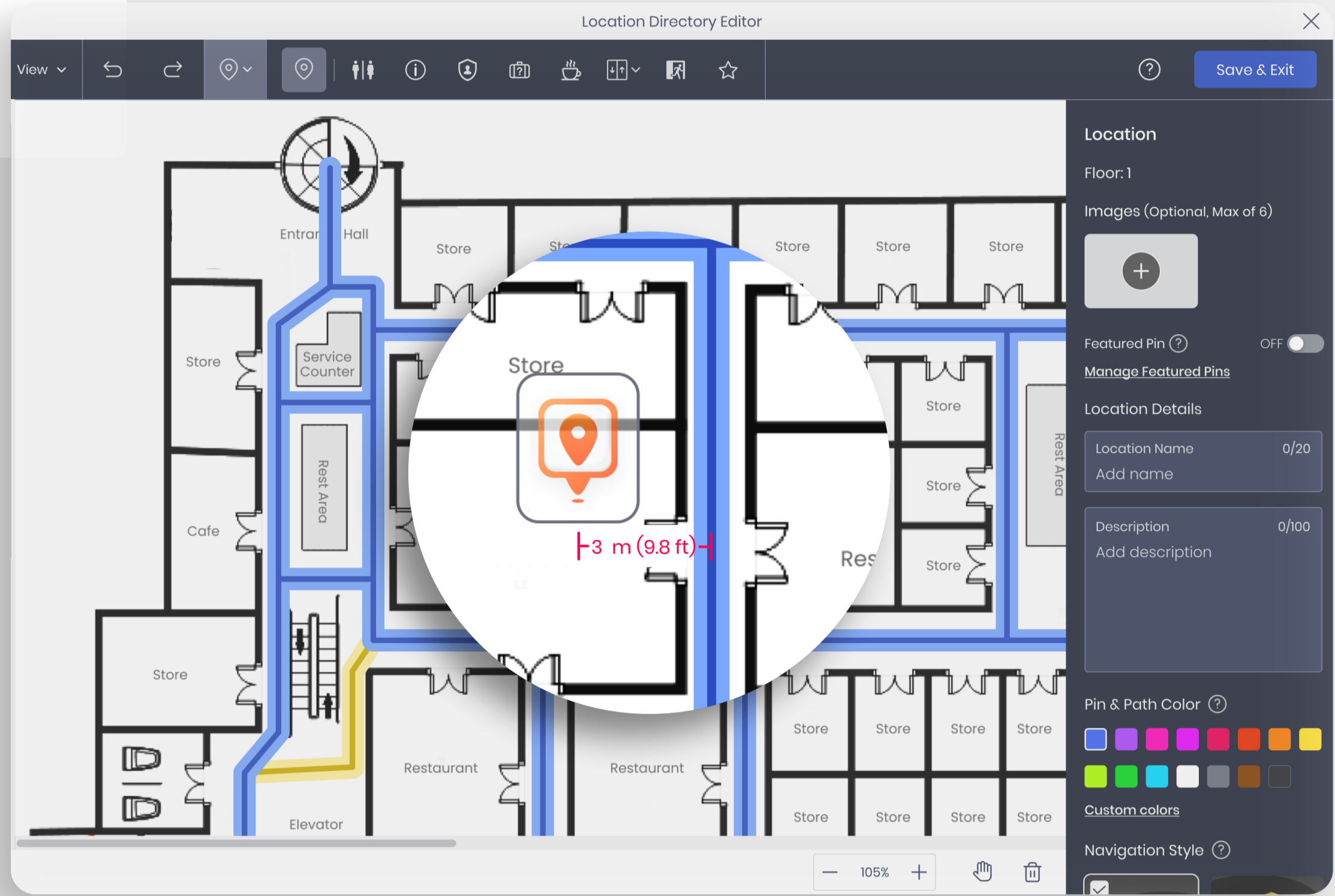
Location Pins & Turn-by-Turn Navigation Best Practices

1 Path creation

Paths should be placed around all accessible areas, as users must be within 3 meters of a path to navigate along it.

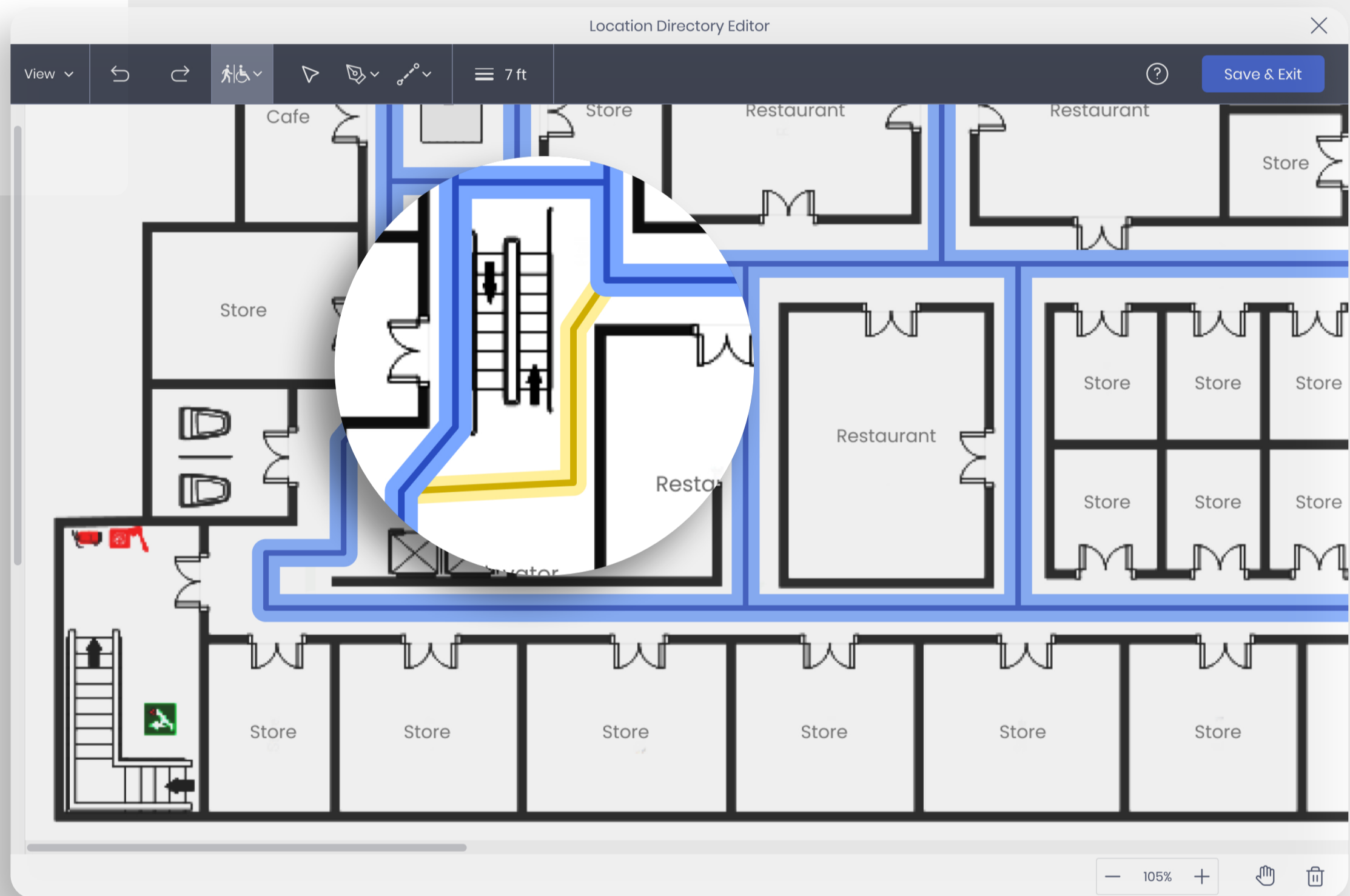
Both **Pins** and **Access Points** (QR codes or Images) should be placed either on the paths or within a maximum distance of approximately 3 meters (9.8 ft) from the paths.

Location pin 3 m (9.8 ft) away from the path



All Access paths are the default path style in blue, and these paths are wheelchair accessible. Start by adding **All Access** paths to the floorplan, and then add the yellow **Walkable Only** paths for areas with limited accessibility.

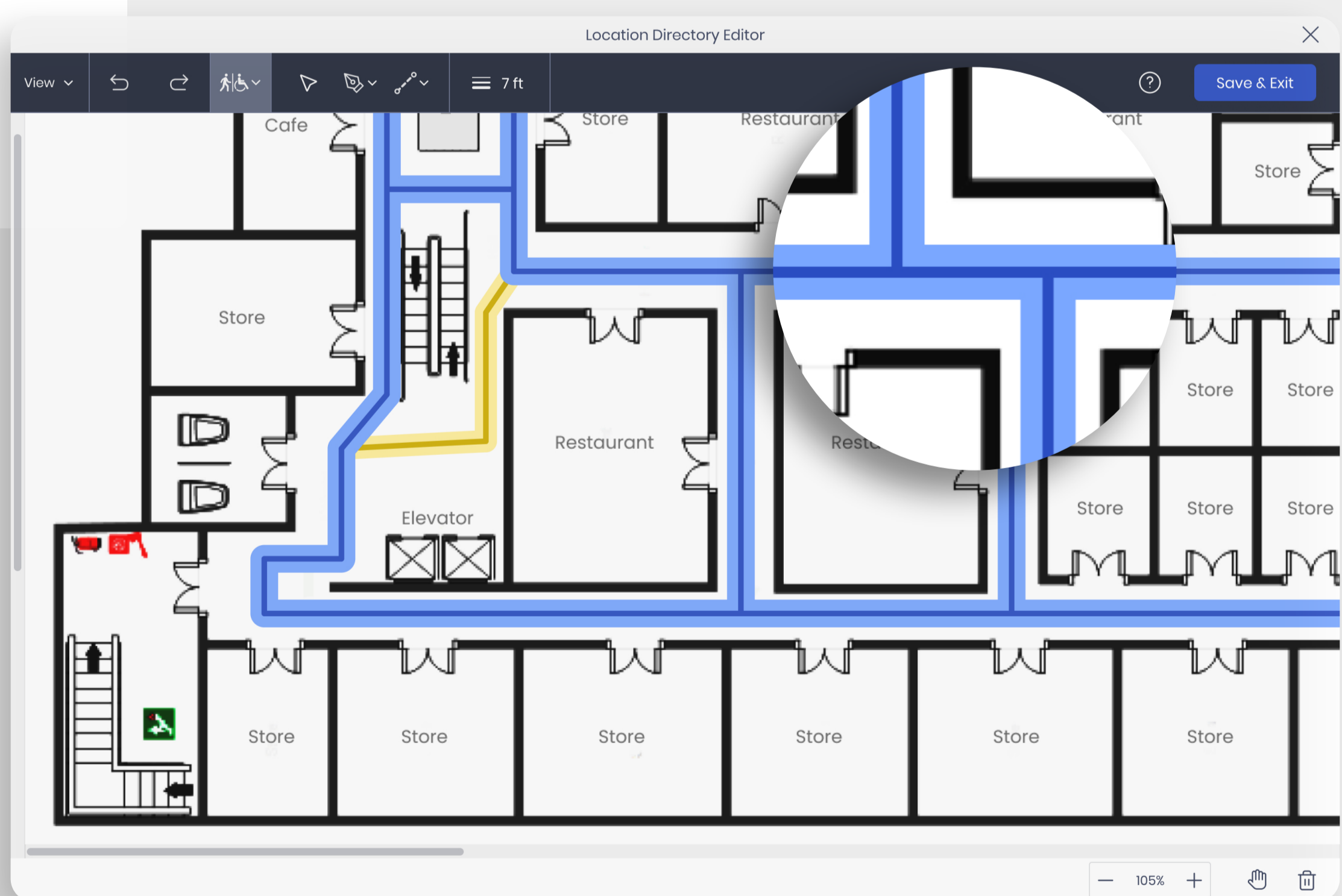
All Access and Walk-able paths visible



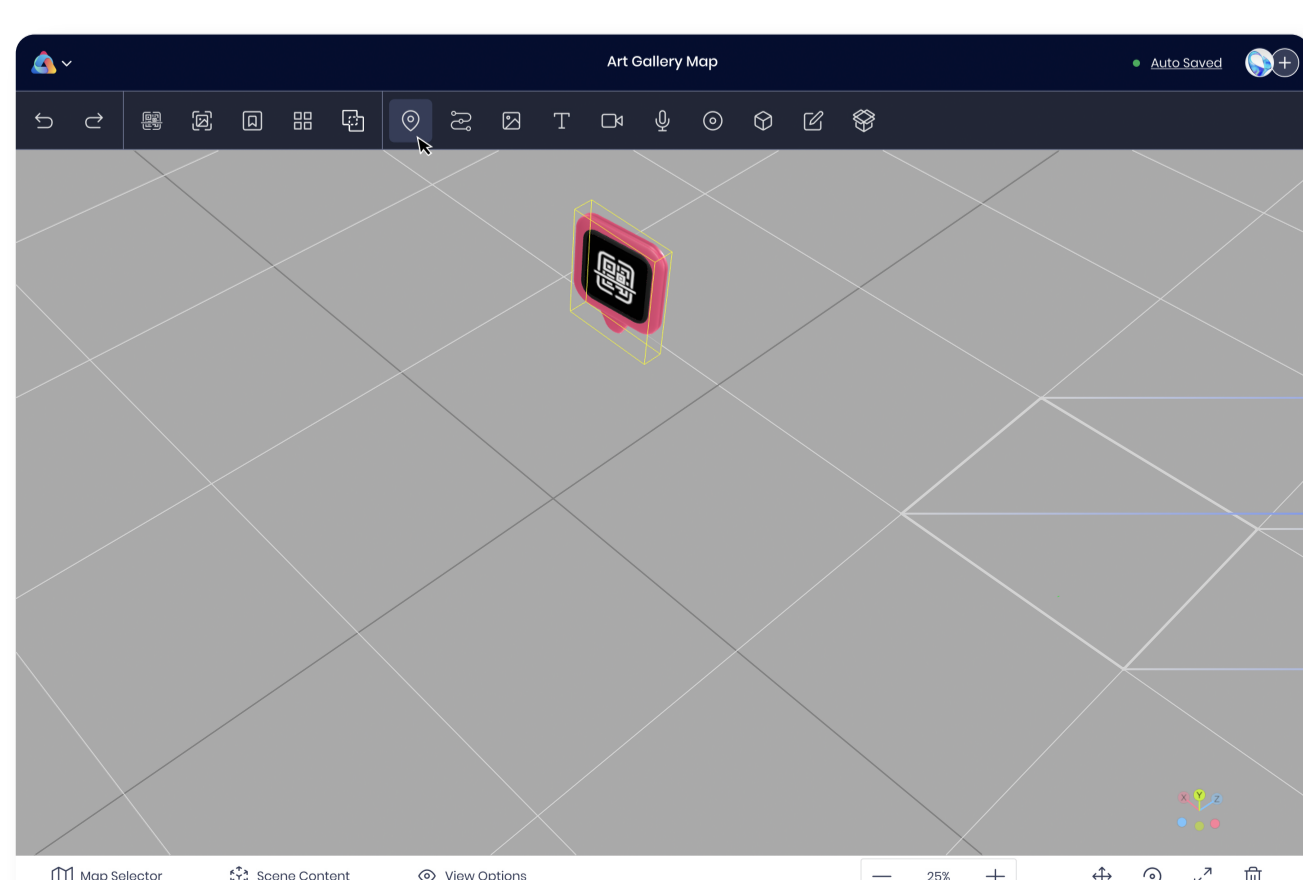
Create a comprehensive network of paths. Ensure that any area where you want to enable wayfinding has a path drawn for it.

Paths need to be connected; ensure that paths intersect.

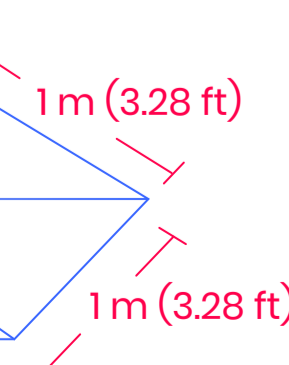
Paths intersection



Note



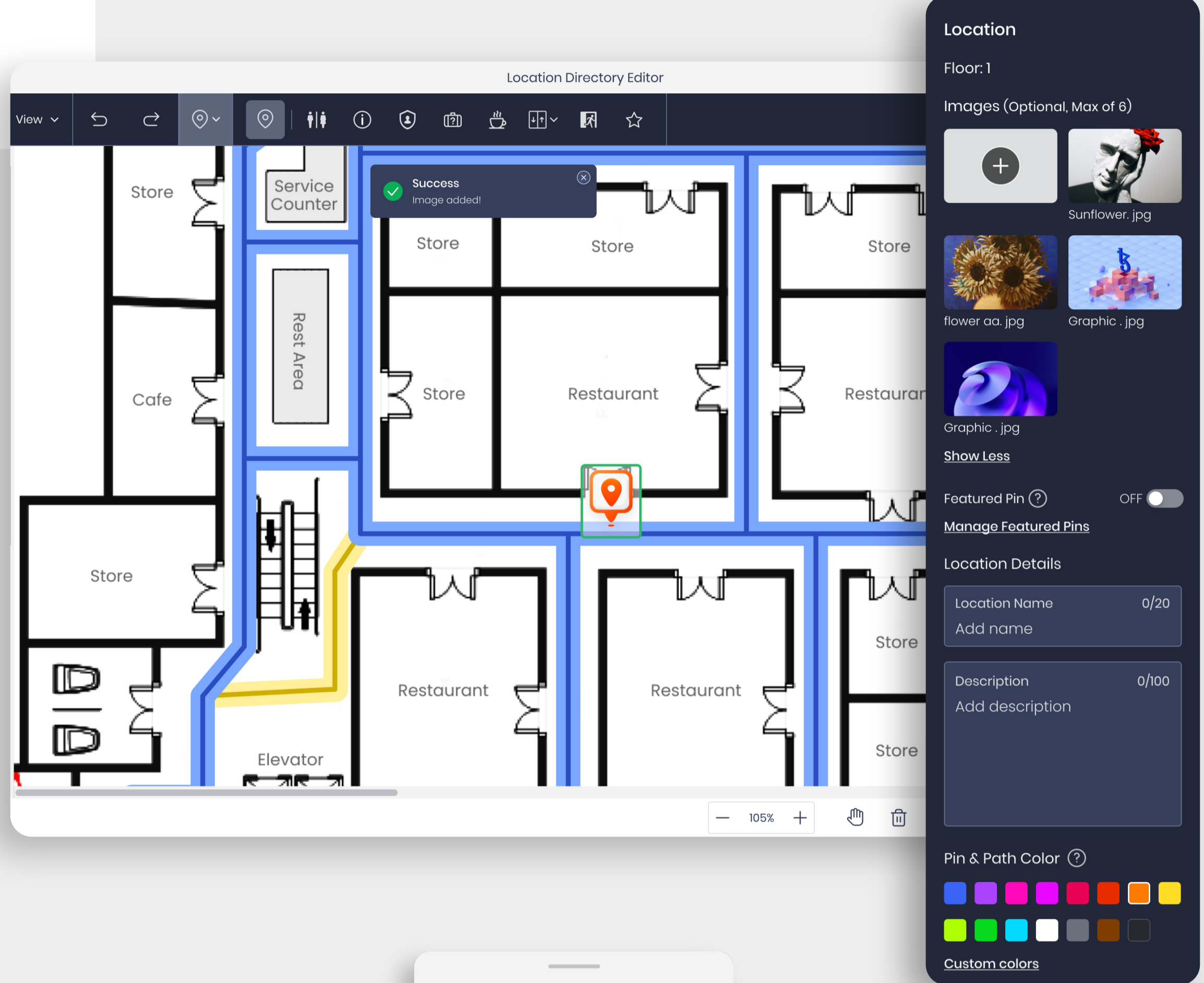
In the **Creator Portal Editor**, each square in the grid is 1 meter (3.28 ft) in length in the real world.



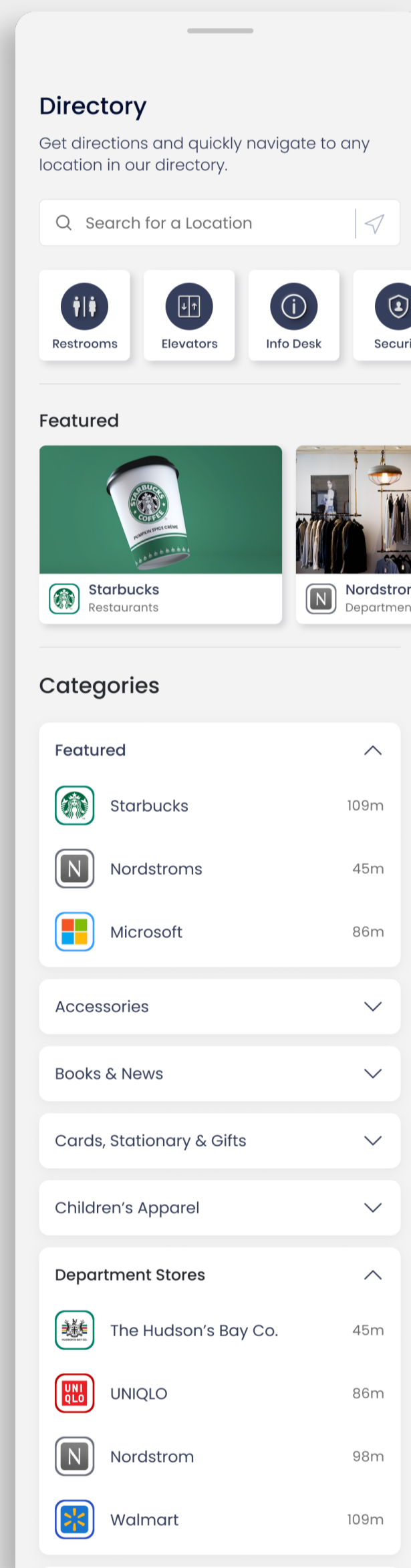
2 Branding

Take advantage of all branding opportunities provided by the ARway platform.

Include images, logos, descriptions, categories, website URLs, and emails for location pins.



Logos appear in the search directory and on the location pin indicator, which helps guide users to their destination.



Featured Pins should be added to each map to highlight and monetize specific destinations or products in the directory.

3 Floorplan alignment

The floorplan must be aligned before adding any location pins or paths.

Location pins and amenity pins should be added from the Creator Portal.

